

Precision Zoning Tool

The Precision Zoning Tool allows farmers to generate zoning maps for their fields that can be used to create custom variable rate applications. Using NDVI analytics, AGMRI creates zones based on the relative health of the crops in the, so farmers can apply products where they are needed most. This guide will demonstrate how to access and use the tool.

STEP 1: ACCESSING THE TOOL

To use the tool, you must be on the latest version of the **AGMRI Enterprise webapp**. While you can view results of a yield estimation on the Grower app, they can only be created in Enterprise. Once you are there:

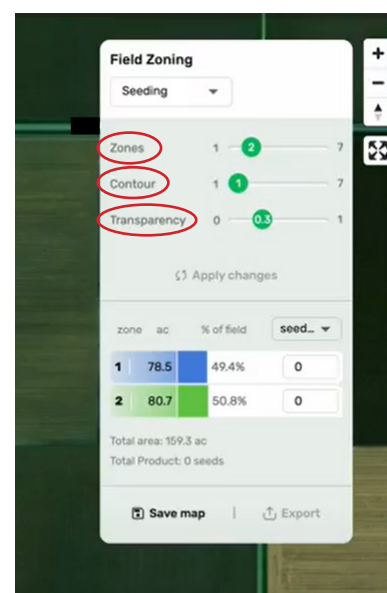
- Open the field you want to create a zoning map for and go to virtual scout.
- Select the **NDVI layer**
- Click the three dots in the top right-hand corner of the screen.
- In the menu that drops down, select **Field Zoning**.

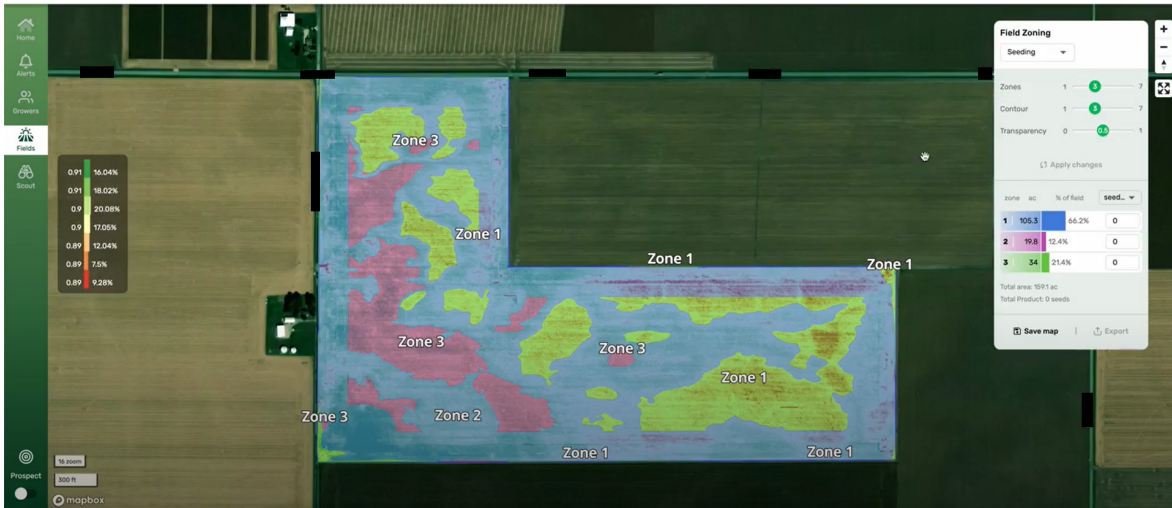


STEP 2: CREATING ZONES

Once you click field zoning, a basic, two-zone map will generate, and a zoning menu will appear in the top-right corner. Using this menu, can adjust the settings of the zone map. The settings include:

- **Zones:** Adjusting this slider will change the **number of zones** generated. More zones allows more precision, sectioning off areas of similar crop health. You can generate between 2-7 zones.
- **Contour:** Adjusts the **shape and edges** of the zone. Low contour means smoother edges, high contour means rough edges.
- **Transparency:** Adjusts the **transparency** of the zone overlay. Increasing it allows you to see more of the NDVI layer below.
- Once you have adjusted the sliders, click **apply changes**

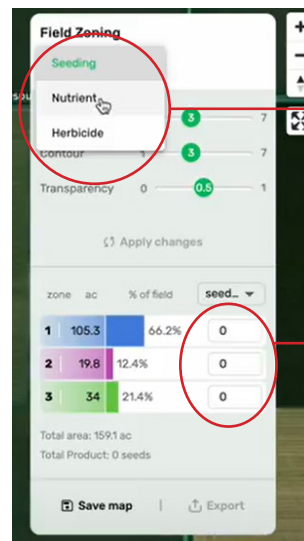




STEP 3: SELECT APPLICATION

Once you are satisfied with your zoning map, you can adjust the settings for the variable rate application.

- Click the dropdown menu at the top of the zoning menu.
- Select an application type: **seeding**, **nutrient**, or **herbicide**.
- Next, go to the input boxes below the zone settings.
- Input the application rate for each zone into the appropriate color-coded box.



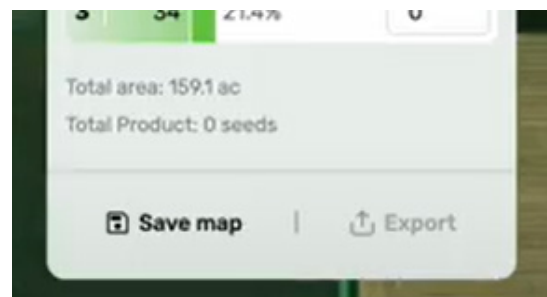
Select the application type here

Input the application rates here. The rate for the blue zone will go in the blue box, the purple zone in the purple box, etc.

STEP 4: EXPORT

Once you've set your application rates, the last step is to export the zoning map. You have two options:

- Click **Save map** to save a copy of the map to your computer
- Click **Export** to send the application directly to field equipment through **John Deere's Operations Center** (JDLink).



And that's it! You've created and exported the zoning map.